

## What are people saying about the Dahlem Reading Fluency Study?

"How can you put into a few words getting a pair of glasses that allows you to see, for the first time ...? To read, without re-reading several times for minimal comprehension, for the first time in 36 years AND even enjoy it?"

- adult study participant who is an M.D.

**"How can you begin to explain about the day that changed your life? When I read without the glasses, it is halting and deliberate; but when I read with them...WOW!"**

- adult study participant who is an award winning teacher

"These glasses have changed not only our child's life, but the life of our whole family. Her grades reflect her new found abilities. She has more confidence in herself. I only wish that she had these lenses earlier in her education and not had to struggle the way she did."

- mother of a child study participant

**"When my daughter was asked to read, I felt sorry for her as her reading is very poor and she labored to say practically every word. However, when she was given the lens and then asked to read the words again, she read the words more fluently than I have ever heard her read. The problem that my daughter has silently suffered for all of her life could be corrected with a special lens."**

- mother of a child study participant



"The glasses do not take away the gift of dyslexia, they take away the burden."

- 16 year old study participant

Dyslexia Solutions Inc. is a  
tax-exempt, nonprofit

501c3 corporation founded  
on the discoveries of

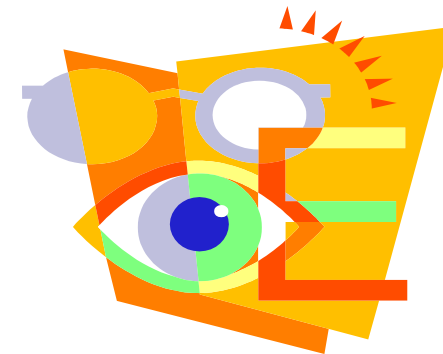
**Dr. Robert Dahlem**

to promote and distribute  
his patented invention

that significantly improves  
reading fluency for

individuals with reading  
difficulties associated with  
the symptoms of dyslexia.

*Helping to get the  
word off the page.*



## Dahlem Reading Fluency Study

---

Dyslexia Solutions Inc.

P.O. Box 436765

Louisville, KY 40253-6765

---

Cindy Baumert

Executive Director

Phone 502-499-2744

Fax: 502-415-7189

[www.readfluent.com](http://www.readfluent.com)

[cbaumert@readfluent.com](mailto:cbaumert@readfluent.com)

## What is the Dahlem Reading Fluency Study?

The Dahlem Reading Fluency Study is a scientific study conducted by Dyslexia Solutions Inc. to assess the nature and degree of effectiveness of Dr. Dahlem's RAD Prism in alleviating the common symptoms of dyslexia in readers experiencing difficulties in attaining reading proficiency and fluency. The specially-designed prism is a new patented invention, the result of Dr. Dahlem's five years of observation, research, and direct work with problem readers.

Participants in the study will receive glasses that incorporate this unique prism design and instructions for how to use the prism. The design of the prism can make it possible to perceive the words correctly and consistently. This reduces the causes of slow and laborious reading.

Ninety-seven percent of the initial 300 study participants reported reading improvement. A group of sixth graders, reading behind grade level, improved their reading level by an average of three years in a nine-month period when using the RAD Prism.

## Who Should Participate in the Study?

**Anyone who reads at a slow and laborious pace due to any of the following characteristics:**

- Sometimes reversing letters and words
- Usually not recognizing sight words (at, is, the, etc.)
- Running words together
- Words appearing to be compressed or small
- Seeing words and letters "move" on the page
- Seeing words and letters as different every time they are read
- Seeing background contrast as poorly defined
- Seeing parts of words and letters "disappear" off the page
- Experiencing anxiety and frustration when reading
- Exhibiting poor understanding of what is read

**These are the common symptoms of dyslexia.**

## How Does a Reader Participate in the Study?

First, the participant should have an eye exam from a licensed optometrist or ophthalmologist to make sure that reading difficulties are not due to problems with vision or any other medical condition related to the eye. If the participant wears prescription glasses, some restrictions may apply.

Second, the participant is required to fill out a participation form and mail it, along with a participation fee to help offset study expenses, to Dyslexia Solutions Inc. at the address on the front of this brochure. If a participation form is not included with this brochure, call 502-499-2744 to get a form or visit our website, [www.readfluent.com](http://www.readfluent.com), and click on "About the Study". The participant receives the RAD Prism as a participant in the study.

Third, the participant is asked to send Dyslexia Solutions Inc. a written testimonial of any reading fluency changes perceived while using the prism lens provided in the study.

If a participant chooses to withdraw from the study, he or she simply returns the study kit in reusable form within 30 days of shipment, and the participation fee will be refunded less shipping and handling costs.